

## PRESSURIZED FLUID CONTAINING COLUMN

## RLG/C

### GENERAL DESCRIPTION

Pressurized column of **RLG/C** system represents the mechanical part of the level gauge series **RLG**.

The mechanical unit does work together with the metering, monitoring and transmission electronic unit **RLG/E**.

### FEATURES

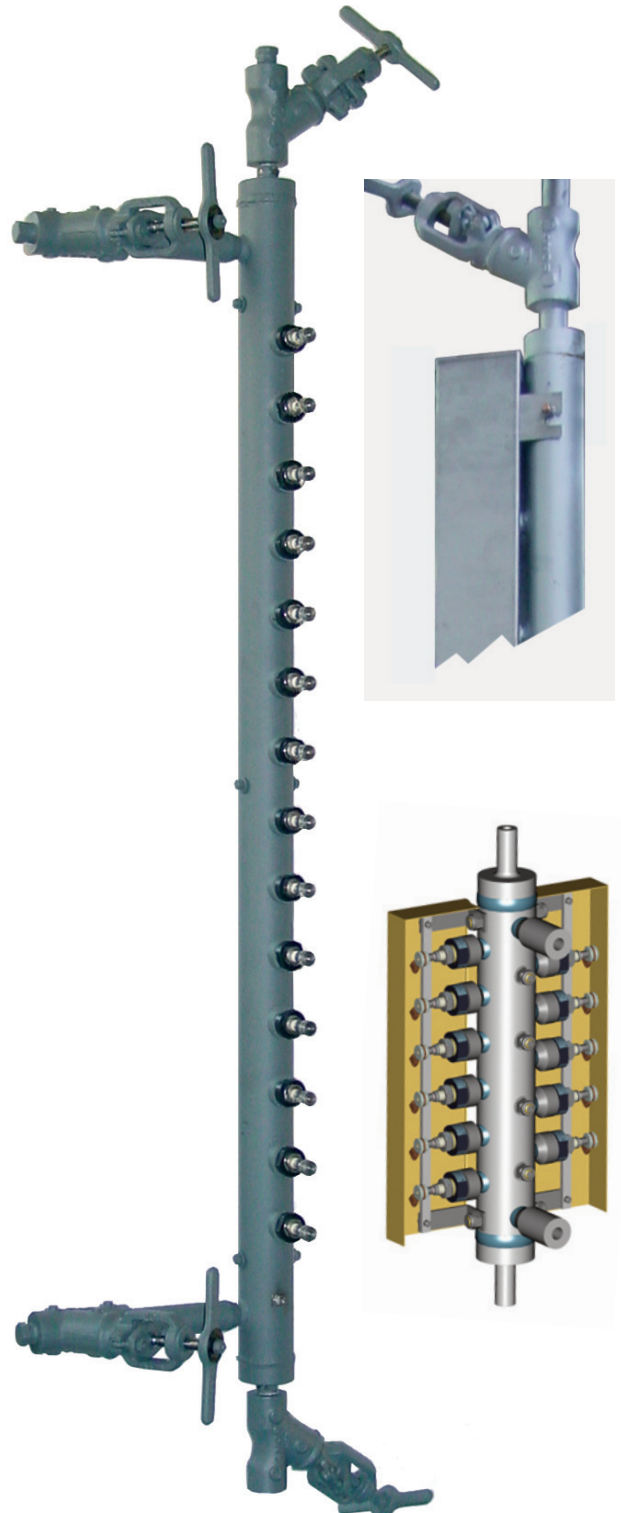
The mechanical unit consists of one or more sets of conductivity sensor electrodes (probes) **RLG/P**, aligned into one or more rows and fitted on the column **RLG/C** at suitable angles and intervals.

Probes and connecting wires are protected by a stainless steel covering.

Columns is equipped with process connections and with vent and drain connections.

We highly recommend the installation of suitable stop valves between process and instrument.

Such valves can isolate the level indicator if required.



## TECHNICAL DATA

### COLUMN

Available in F316 o A105 .  
Available as standard up to 20 probes.  
For higher probes number, please apply to our  
Technical or sales Department.

**Design pressure:** 210 bar

**Design temperature:** 374°C

**Standard connections to process:** 1" flat  
face nipples. Other connections upon request.

#### **Vent and drain connections:**

- 1/2" - 3/4" Sch 160 PE/BW (refer to Fig. A)
  - 1/2" - 3/4" SW (refer to Fig. B)
  - 1/2" - 3/4" NPT with plug or nipple (refer to Fig. C)
- Other connection upon request.

**Minimum probes gap (P):** 50mm if probes  
are on one line only; 25mm if probes are on  
two opposite alternate lines.

**Minimum distance between connections  
(CC):** depending on probe number.

**Minimum distance between connection  
and probe (C,D):** 25mm

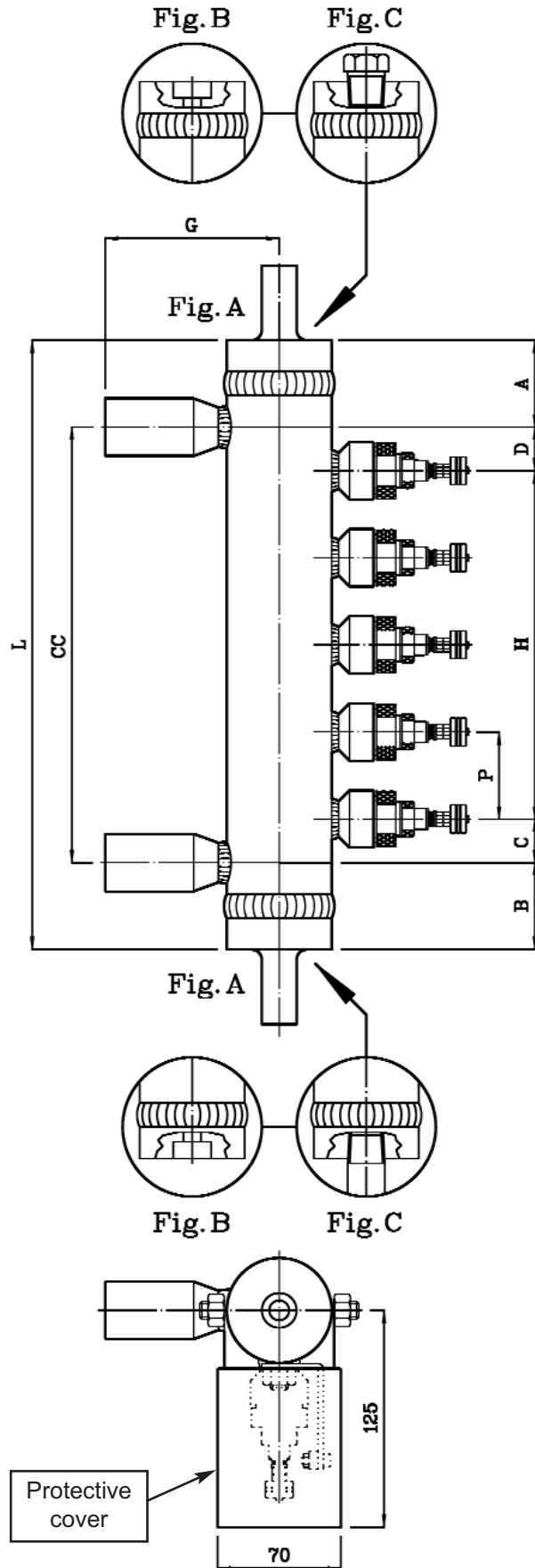
**Minimum distance between column center  
and connection end (G):** 100mm

### APPLICABLE STANDARDS

94/23/CE - PED

ASME B31.1

ATEX: II3G ExnL IIC T6 /  
II3D tD A22 IP66 T135 °C



### **CESARE BONETTI S.p.A.**

Via Cesare Bonetti 17 - 20024 Garbagnate Milanese (Italy)  
Telefono: +3902 990721  
Telefax: +3902 9952483  
Internet web site: <http://www.cesare-bonetti.it>  
E-mail: [bont.post@bont.it](mailto:bont.post@bont.it)

Vendite Italia:	Telefono:	+39 02 99 072 333
	Telefax:	+39 02 99 072 300
	E-mail:	<a href="mailto:italia@bont.it">italia@bont.it</a>
Export sales:	Telephone:	+39 02 99 072 444
	Telefax:	+39 02 99 072 400
	E-mail:	<a href="mailto:export@bont.it">export@bont.it</a>